

Numerical analysis on atomization and spray combustion

Report Number: R24EA2150

Subject Category: Aeronautical Technology

URL: <https://www.jss.jaxa.jp/en/ar/e2024/27538/>

● Responsible Representative

Junichi Kazawa, Japan Aerospace Exploration Agency, Aeronautical Technology Directorate, Aviation Environmental Sustainability Innovation Hub

● Contact Information

Kazuaki Matsuura, Japan Aerospace Exploration Agency, Aeronautical Technology Directorate, Aviation Environmental Sustainability Innovation Hub(matsuura.kazuaki@jaxa.jp)

● Members

Kazuaki Matsuura, Kinya Saito, Kodai Kato, Jun Iino, Naoki Nakamura, Mitsumasa Makida

● Abstract

A numerical study is performed to clarify phenomena on atomization and spray combustion.

● Reasons and benefits of using JAXA Supercomputer System

Phenomena on atomization and spray combustion require a high calculation load, and the use of super computer is necessary.

● Achievements of the Year

Numerical simulations were performed to investigate combustion instabilities on a coaxially-staged lean-burn fuel injector.

For response of fuel flow rate to back pressure oscillation, a linear-type response model was employed.

Effects of pilot injection response delays on frequencies and amplitudes of pressure oscillations in the combustor were investigated, with fixing response parameters on main injection.

An example of such results is shown in Figure 2.

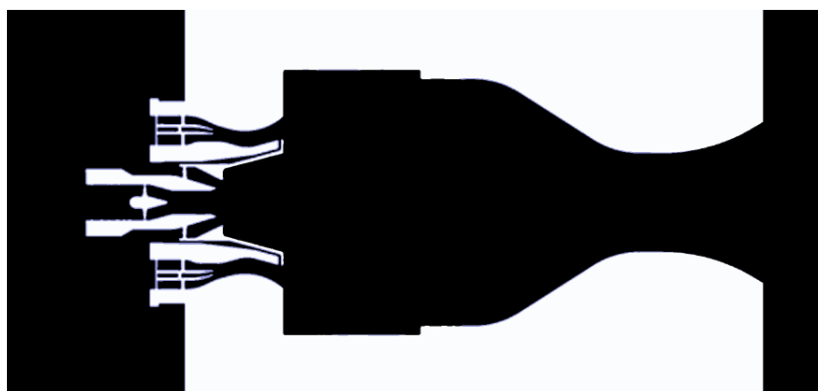
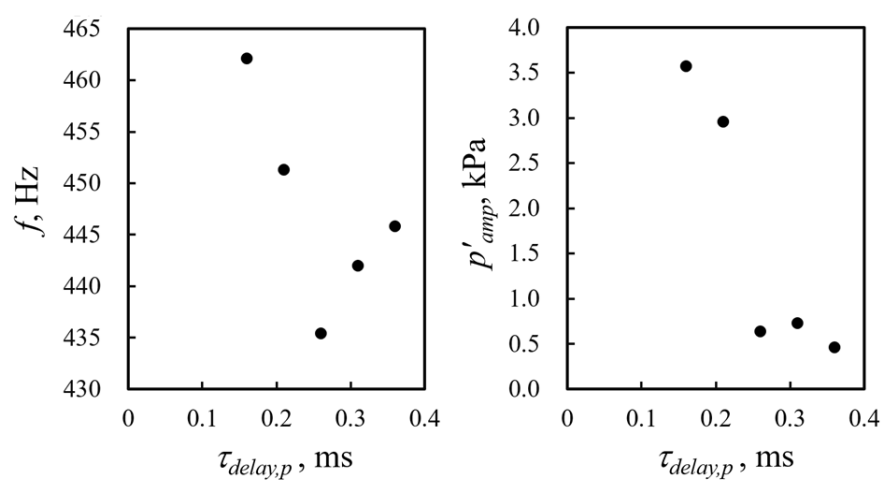


Fig. 1: Major part of numerical mesh for the combustor.



Courtesy of Prof. Kurose of Kyoto Univ. for technical advice on CFD method

Fig. 2: Effects of pilot injection response delays on frequencies and amplitudes of pressure oscillations in combustion instabilities.

● Publications

N/A

● Usage of JSS

● Computational Information

Process Parallelization Methods	MPI
Thread Parallelization Methods	N/A
Number of Processes	512
Elapsed Time per Case	160 Hour(s)

● JSS3 Resources Used

Fraction of Usage in Total Resources*1(%): 1.25

Details

Computational Resources		
System Name	CPU Resources Used (core x hours)	Fraction of Usage*2(%)
TOKI-SORA	26,706,921.19	1.22
TOKI-ST	2,349,055.29	2.41
TOKI-GP	0.00	0.00
TOKI-XM	0.00	0.00
TOKI-LM	215.67	0.02
TOKI-TST	0.00	0.00
TOKI-TGP	0.00	0.00
TOKI-TLM	0.00	0.00

File System Resources		
File System Name	Storage Assigned (GiB)	Fraction of Usage* ² (%)
/home	350.95	0.24
/data and /data2	132,246.67	0.63
/ssd	0.00	0.00

Archiver Resources		
Archiver Name	Storage Used (TiB)	Fraction of Usage* ² (%)
J-SPACE	0.09	0.00

*¹: Fraction of Usage in Total Resources: Weighted average of three resource types (Computing, File System, and Archiver).

*²: Fraction of Usage : Percentage of usage relative to each resource used in one year.

● ISV Software Licenses Used

ISV Software Licenses Resources		
	ISV Software Licenses Used (Hours)	Fraction of Usage* ² (%)
ISV Software Licenses (Total)	2.62	0.00

*²: Fraction of Usage : Percentage of usage relative to each resource used in one year.