

Numerical analysis on atomization and spray combustion

Report Number: R20EA2150

Subject Category: Aeronautical Technology

URL: <https://www.jss.jaxa.jp/en/ar/e2020/14184/>

● Responsible Representative

Tatsuya Ishii, Propulsion Research Unit, Aeronautical Technology Directorate

● Contact Information

Kazuaki Matsuura, Japan Aerospace Exploration Agency, Aeronautical Technology Directorate, Propulsion Research Unit(matsuura.kazuaki@jaxa.jp)

● Members

Kazuaki Matsuura, Naoki Nakamura, Mitsumasa Makida, Huilai Zhang, Jun Iino, Kinya Saito

● Abstract

A numerical study is performed to clarify phenomena on atomization and spray combustion.

● Reasons and benefits of using JAXA Supercomputer System

Phenomena on atomization and spray combustion require a high calculation load, and the use of super computer is necessary.

● Achievements of the Year

A preliminary investigation on models on the effects of fuel-supply response to oscillating air flows was performed for combustion-oscillation conditions with influence of the downstream duct of the test rig.

As a result, different oscillation modes and their frequencies were observed depending on the response models.

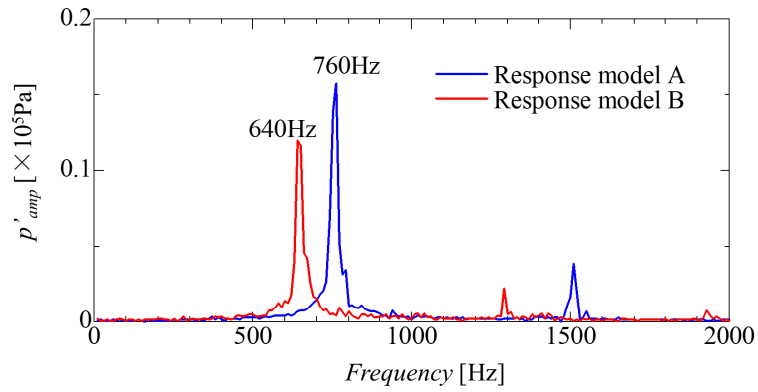


Fig. 1: Frequency spectrum of pressure in the combustion chamber.

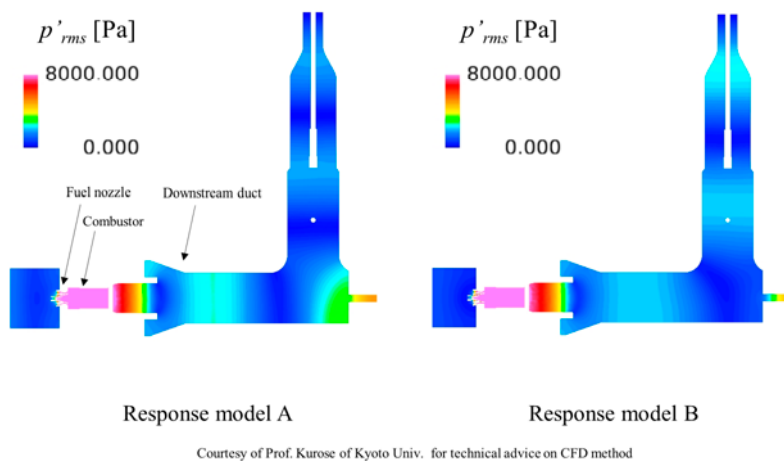


Fig. 2: Spatial distributions of r.m.s. values of pressure oscillations.

● **Publications**

N/A

- Usage of JSS

- Computational Information

Process Parallelization Methods	MPI
Thread Parallelization Methods	N/A
Number of Processes	512
Elapsed Time per Case	96 Hour(s)

- Resources Used(JSS2)

Fraction of Usage in Total Resources*1(%): 0.46

Details

Computational Resources		
System Name	Amount of Core Time (core x hours)	Fraction of Usage*2(%)
SORA-MA	2,719,282.99	0.51
SORA-PP	597.48	0.00
SORA-LM	0.00	0.00
SORA-TPP	0.00	0.00

File System Resources		
File System Name	Storage Assigned (GiB)	Fraction of Usage*2(%)
/home	315.91	0.29
/data	26,369.97	0.51
/ltmp	2,700.34	0.23

Archiver Resources		
Archiver Name	Storage Used (TiB)	Fraction of Usage*2(%)
J-SPACE	0.10	0.00

*1: Fraction of Usage in Total Resources: Weighted average of three resource types (Computing, File System, and Archiver).

*2: Fraction of Usage : Percentage of usage relative to each resource used in one year.

- **Resources Used(JSS3)**

Fraction of Usage in Total Resources*1(%): 0.18

Details

Computational Resources		
System Name	Amount of Core Time (core x hours)	Fraction of Usage*2(%)
TOKI-SORA	897,540.05	0.19
TOKI-RURI	100.65	0.00
TOKI-TRURI	0.00	0.00

File System Resources		
File System Name	Storage Assigned (GiB)	Fraction of Usage*2(%)
/home	325.29	0.22
/data	26,633.14	0.45
/ssd	134.42	0.07

Archiver Resources		
Archiver Name	Storage Used (TiB)	Fraction of Usage*2(%)
J-SPACE	0.10	0.00

*1: Fraction of Usage in Total Resources: Weighted average of three resource types (Computing, File System, and Archiver).

*2: Fraction of Usage : Percentage of usage relative to each resource used in one year.